

# Welcome to the Sayn Butterfly Garden



Start your tour by walking through a **Climate Controlled Entrance** (daytime temperature inside approx. 24 C, humidity 60-70%).

Once inside the Butterfly Garden please turn right to look at the **Display Cases**. The first one contains *butterfly pupae* (chrysalides), which are sent to Sayn once a week by our breeders from various tropical countries.



The pupae often resemble leaves or pieces of wood, but they are in fact alive. A complete transformation (metamorphosis) from caterpillar to butterfly takes place inside the pupa (chrysalis). If you are really lucky you can observe a butterfly emerging from its pupa. This usually happens in the morning hours. The chrysalis splits apart and the adult insect can begin to force its way out. After a short rest the butterfly starts to pump "blood" into the veins of its wings, expanding them to their full size. Now the wings will dry and the butterfly must start exercising the flight muscles. About half an hour later it is ready to be released by our biologist into its new habitat.

In the adjacent display cases we exhibit a scorpion, a tarantula and other invertebrates.



Going ahead you reach the **Filippa Bridge**. This bridge as well as all the others are named after the seven children of Prince Alexander and Princess Gabriela zu Sayn-Wittgenstein, owners of the garden.



Instead of crossing the Filippa Bridge, you can reach the **Sofia Bridge**, the only elevated bridge, via the **Jungle Path**. There one of the *feeding places* can be found with fruit offered as additional food for the butterflies, especially the Owl butterfly. The main source of nourishment



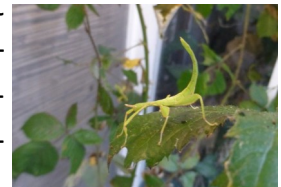
for butterflies, however, is nectar. Walking through the butterfly house you will see several Lantana camara and Hibiscus bushes, both important nectar-producing plants. Butterflies sip nectar through their long proboscises which they can insert into the deep tube of a flower.



From the **Alexandra Bridge** watch our *Japanese Koi carps* in the pond and the turtles on their small **Turtle Islands**. Look out when following the path to the right, passing the hibiscus hedge you may encounter a quail family with its *tiny chicks* no bigger than a bumble bee. After exiting the eggs the young quails follow their parents immediately, chirping and cheeping loudly whilst looking for food. They however still need to be warmed by their parents for about two weeks.



Enjoy a view of the entire garden from the elevated **Sofia Bridge** and listen to the twittering of the *finches* from Australia, Asia and Africa in a fig tree behind you. In the display cases next to the Sofia Bridge discover various *insects* and other "creepy-crawlies". Just like some butterflies, these creatures have developed special survival techniques and are perfectly camouflaged.





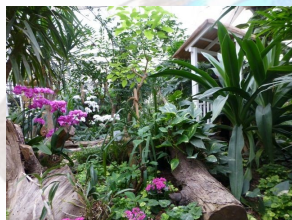
The next door pavilion, the "**Caterpillar and Moth House**", exhibits various species of moths, frequently the *Giant Atlas Moth* (*Attacus atlas*), one of the world's largest species with a wing-span of up to 30cm.



Do you know the main difference between butterflies and moths? Most butterflies fly by day and most moths are active during the night. Moths do have antennae resembling feathers where else a butterfly has clubbed antennae. This pavilion is also the nursery where we breed butterflies. It provides the opportunity to observe the entire life-cycle of butterflies. Did you know, that the body of a pupating butterfly caterpillar almost completely dissolves, and that up to 98% of its cells die before a new butterfly is "born"?



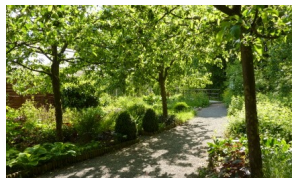
Back to the other greenhouse, turn right to cross the **Louis Bridge**. On your right you can see a *waterfall* planted with orchids, bromelias and ferns where our *Green Iguana* likes to hide. Here on the south side of the house the butterflies enjoy dancing on sunny days. Through the first arch you reach benches where, resting quietly, you can admire the busy life around you and the banana plant opposite which bears delicious fruit every year.



Further on, the *orchid path* takes you to the **Christian Peter Bridge** which is the only covered bridge in the butterfly house. Now you can either turn right and crossing the Filippa Bridge you reach the exit or continue and stay with the butterflies a little longer. There is still so much to see!



After having left the butterflies behind you, souvenirs and interesting literature can be purchased in our **Boutique** and refreshments are available in the **Cafeteria**.



Outside you may wish to stroll along our **Nature Trail** leading you around the butterfly house: discover the little herb garden, the cottage garden, the dry stone wall, the fruit-bearing hedge and the flowering hedge. The path leads to a small bridge from where you can watch animals in a pond. Our biologists will be happy to answer any questions you may have.

In our **Pavilion** next to the Cafeteria we show **exhibitions** focused on environmental issues. Our program changes regularly during the season.

### Thank you for visiting the Butterfly Garden of Sayn!



Now you are invited to visit the **Sayn Palace** with the **Princesses Room** showing an exhibition on seven generations of the princely family, the **Ornamental Cast Iron Museum** and the **chapel** with its important arm reliquary of Saint Elizabeth of Hungary.



We do hope you have enjoyed your visit to **Sayn** and look forward to seeing you again!

**Auf Wiedersehen!**

Garten der Schmetterlinge Schloss Sayn, Im Fürstlichen Schlosspark, 56170 Bendorf-Sayn / Germany

Tel.+49(0)-2622-15478

E-Mail: [schmetterlinge@sayn.de](mailto:schmetterlinge@sayn.de) , [www.schmetterlinge.net](http://www.schmetterlinge.net) , [www.sayn.de](http://www.sayn.de)